

KORNBERG SEQNOSTICS

Lyoner Strasse 10, Frankfurt 60528, Germany | Email: contact@kornbergseqnostics.com



Cat No : KS68491

Product:

Recombinant Protein ORF8 SARS-CoV2

Expression:

Bacteria

Tag and Terminus:

N-Term GST Uncleaved

Purification Method:

GSH-Agarose

Calculated molecular mass:

Mono-Isotopic Mass: 40, 628.51 daltons

Average Mass: 40, 655.17 daltons

Purity:

75 %

Storage Buffer:

50 mM Tris-HCl pH 7.5, 270 mM Sucrose, 150 mM NaCl, 0.1 mM EGTA, 0.1 % 2-mercaptoethanol, 0.03 % Brij-35

Storage Temperature:

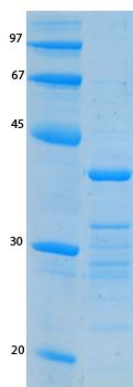
-70 °C

Theoretical PI:

4.77

Gel Information :

Gel Image 1:



Native Sequence:

MSPILGYWKIKGLVQPTRLLEYLEEKYEEHLYERDEGDKWRNKKFELGLEFPNLPYYIDGDVK
LTQSMAIRYIADKHNMLGGCPKERAIEISMLEGAVLDIRYGVSR IAYS KDFETLKVDFLSKLP EML
KMFEDRLCHKTYLNGDHVTHPDFMLYDALDVVLYMDPMCLDAFPKLVCFKKRIEAI PQIDKYLK
SSKYIAWPLQGWQATFGGGDHPPKSDLEVL FQG PLGSMKFLVFLGIITTVAA FHQECSLQ SCT
QHQP YVVDDPCPIHFYSK WYIRVGARKSAPLIELCVDEAGSKSPIQYIDIGNYTVSCLPFTINCQ
EPKLGSLVVRCSFYEDFLEYHDVVRVLD F I

Amino acids M1 – I121 (end). Residue M232 of the fusion protein is equivalent to M1 of the native enzyme. The GST tag is located at residues 1 – 220.

Protease Cleavage:

PreScission (LEVLFQGP) residues 221 - 228