

## KORNBERG SEQNOSTICS

Lyoner Strasse 10, Frankfurt 60528, Germany | Email: [contact@kornbergseqnostics.com](mailto:contact@kornbergseqnostics.com)



**Cat No :** KS67714

**Product:**

Recombinant Protein NSP1 SARS-CoV2

**Expression:**

Bacteria

**Tag and Terminus:**

N-Term MBP Uncleaved

**Purification Method:**

Amylose Resin

**Calculated molecular mass:**

Mono-Isotopic Mass: 63, 974.47 daltons

Average Mass: 64, 014.22 daltons

**Purity:**

90 %

**Storage Buffer:**

50 mM Tris-HCl pH 7.5, 270 mM Sucrose, 150 mM NaCl, 0.1 mM EGTA, 0.1 % 2-mercaptoethanol, 0.03 % Brij-35

**Storage Temperature:**

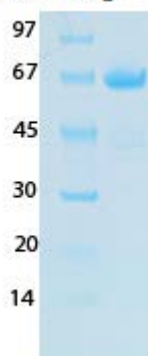
-70 °C

**Theoretical PI:**

5.01

**Gel Information :**

**Gel Image 1:**



## **Native Sequence:**

MKIEEGKLVIIWINGDKGYNGLAEVGGKFEKDTGIKVTVEHPDKLEEKFPQVAATGDGPDIIFWA  
HDRFGGYAQSGLLAEITPDKAFQDKLYPFTWDAVRYNGKLIAYPIAVEALSLIYNKDLLPNPPKT  
WEEIPALDKELKAKGKSALMFNLQEPYFTWPLIAADGGYAFKYENGGYDIKDVGVNDNAGAKAG  
LTFLVDLIKNKHMNADTDYSIAEAAFNKGETAMTINGPWAWSNIDTSKVNYGVTVLPTFKGQPS  
KPFVGVLSAGINAASPNKELAKEFLENYLLTDEGLEAVNKDKPLGAVALKSYEEELVKDPRIAT  
MENAQKGEIMPNIQMSAFWYAVRTAVINAASGRQTVDEALKDAQTNSSSSNNNNNNNNNNNLG  
DDDDKVPEFLEVLVFGPLGSMESLVPGFNEKTHVQLSLPVLQVRDVLVRGFGDSVEEVLSEAR  
QHLKDGTCGLVEVEKGVLPQLEQPYVFIKRS DARTAPHGHVMVELVAELEGIQYGRSGETLGV  
LVPHVGEIPVAYRKVLLRKNKNGKAGGHSYGADLKSFDLGDELGTDPYEDFQENWNTKHSSG  
VTRELMRELNGG

Amino acids M1 – G180 (end). Residue M404 of the fusion protein is equivalent to M1 of the native enzyme. The MBP tag is located at residues 1 – 367.

## **Protease Cleavage:**

PreScission (LEVLFQGP) residues 393 – 400